

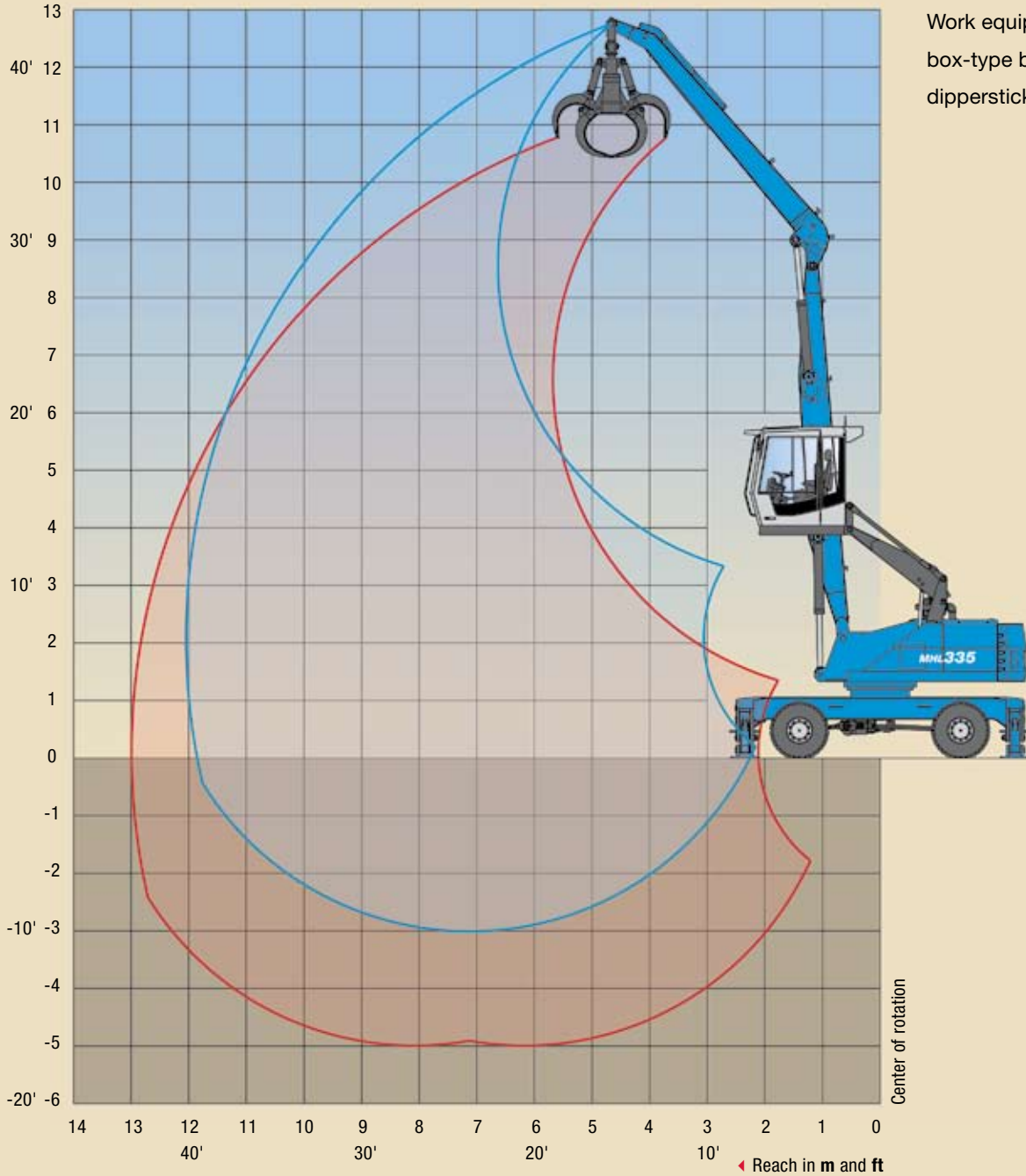
# WORKING DIAGRAM

MHL 335 REACH 12 m (39.4')

Work equipment:

box-type boom 6.5 m (21.3'),

dipperstick 5.45 m (17.9')



Center of rotation

Reach in m and ft

# LIFTING CAPACITY

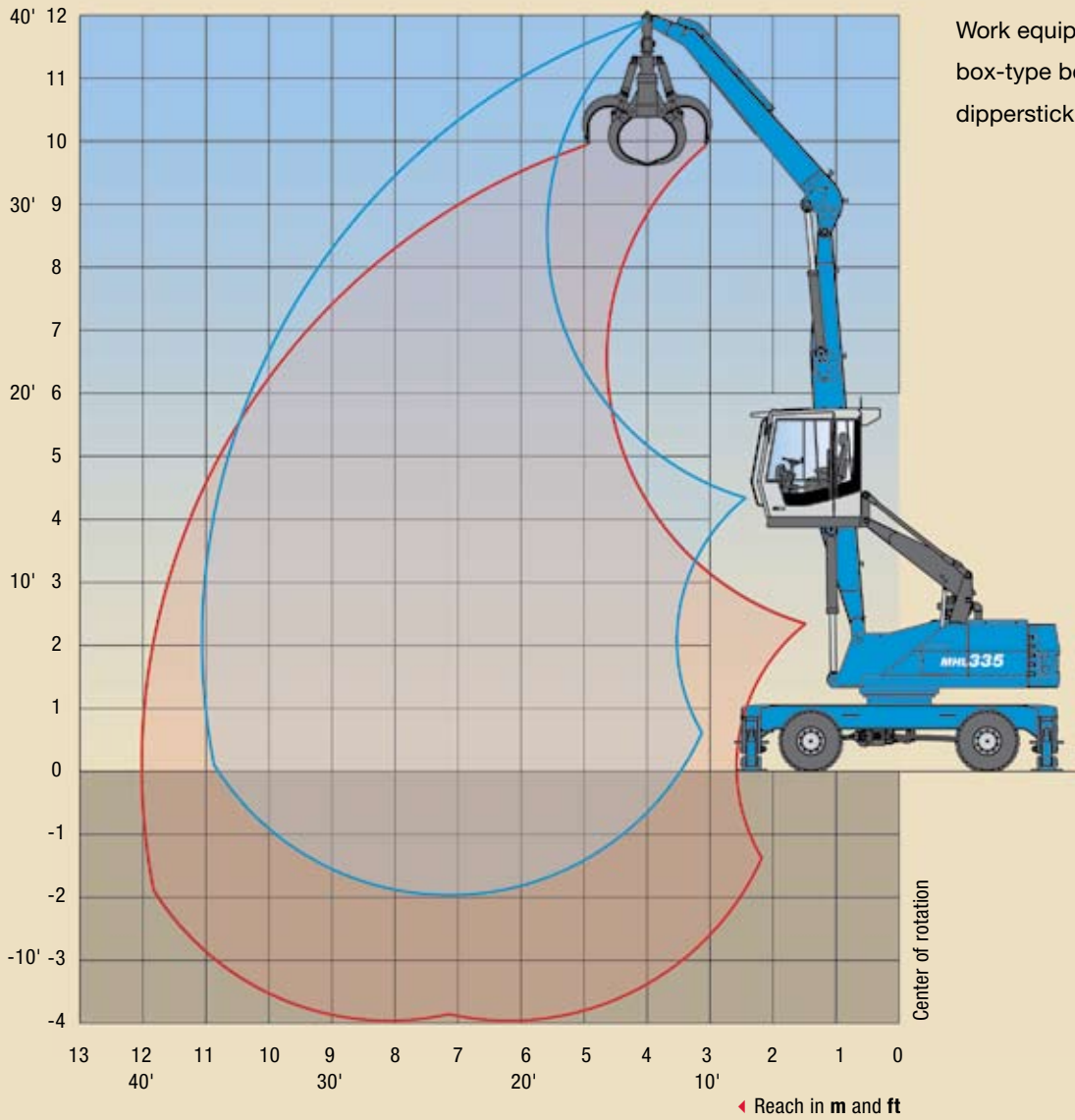
## MHL 335 REACH 12 m (39.4')

HEIGHT (m)	UNDERCARRIAGE STABILIZERS	REACH (m)					
		4.5	6	7.5	9	10.5	12
10.5	non supported			(4.4*)			
	4-pt. supported			4.4* (4.4*)			
9	non supported			(4.5)	(3.3)		
	4-pt. supported			5.1* (5.1*)	4.1* (4.1*)		
7.5	non supported			(4.5)	(3.3)	(2.5)	
	4-pt. supported			5.1* (5.1*)	4.8* (4.8*)	3.2* (3.2*)	
6	non supported			(4.4)	(3.3)	(2.5)	
	4-pt. supported			5.4* (5.4*)	5.0* (5.0*)	3.9 (4.4*)	
4.5	non supported		(6.0)	(4.2)	(3.2)	(2.5)	
	4-pt. supported		6.7* (6.7*)	5.8* (5.8*)	4.9 (5.2*)	3.9 (4.7*)	
3	non supported	(8.8)	(5.7)	(4.0)	(3.1)	(2.4)	(1.9)
	4-pt. supported	10.1* (10.1*)	7.7* (7.7*)	6.3* (6.4*)	4.8 (5.5*)	3.8 (4.7)	2.9* (2.9*)
1.5	non supported	(8.0)	(5.3)	(3.8)	(2.9)	(2.3)	(1.9)
	4-pt. supported	12.3* (12.3*)	8.6 (8.8*)	6.1 (6.9*)	4.7 (5.8*)	3.7 (4.6)	3.1* (3.1*)
0	non supported	(7.5)	(5.0)	(3.7)	(2.8)	(2.3)	
	4-pt. supported	9.0* (9.0*)	8.3 (9.5*)	5.9 (7.3*)	4.6 (5.7)	3.7 (4.6)	
-1.5	non supported	(7.2)	(4.8)	(3.5)	(2.8)	(2.3)	
	4-pt. supported	7.4* (7.4*)	8.1 (9.6*)	5.8 (7.4*)	4.5 (5.6)	3.6 (4.5)	
-3	non supported			(3.5)			
	4-pt. supported			5.8 (7.1*)			

Capacity values are stated in metric tons (t). The pump pressure is 360 bar (5,221 psi). The values, in accordance with ISO 10567, amount to 75% of the static tipping load or 87% of the hydraulic lifting force (marked \*). They apply to slewing operations through 360° on a firm and level surface. Values in brackets apply to the longitudinal direction of the undercarriage. "Non-supported" values apply when the load is hoisted above the front or rear axle. The weight of the attached hoisting equipment (quick attach, grab, magnet, load hook, etc.) must be deducted from the capacity values. Load holding valves on the lift cylinders and an overload warning device are required for crane operations.

# WORKING DIAGRAM

MHL 335 REACH 11 m (36')



# LIFTING CAPACITY

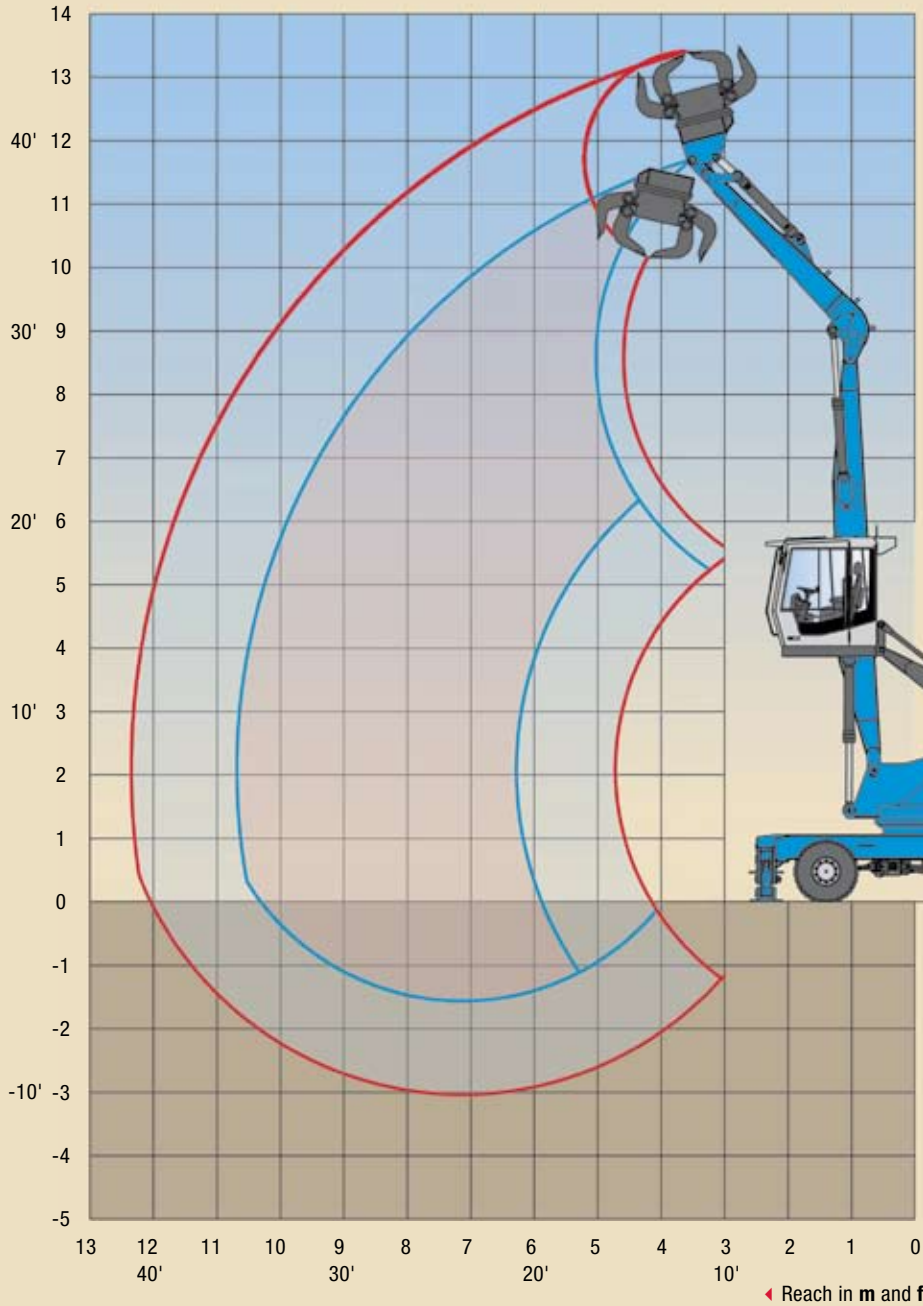
## MHL 335 REACH 11 m (36')

HEIGHT (m)	UNDERCARRIAGE STABILIZERS	REACH (m)				
		4.5	6	7.5	9	10.5
10.5	non supported		(5.7*)			
	4-pt. supported		5.7* (5.7*)			
9	non supported		(6.3)	(4.4)		
	4-pt. supported		6.3* (6.3*)	5.7* (5.7*)		
7.5	non supported		(6.2)	(4.4)	(3.2)	
	4-pt. supported		6.4* (6.4*)	5.8* (5.8*)	5.0 (5.0*)	
6	non supported		(6.1)	(4.3)	(3.2)	
	4-pt. supported		6.8* (6.8*)	6.0* (6.0*)	4.9 (5.5*)	
4.5	non supported	(9.1)	(5.8)	(4.1)	(3.1)	(2.4)
	4-pt. supported	9.7* (9.7*)	7.6* (7.6*)	6.4* (6.4*)	4.8 (5.6*)	3.8 (4.6*)
3	non supported	(8.3)	(5.4)	(3.9)	(3.0)	(2.4)
	4-pt. supported	11.8* (11.8*)	8.6* (8.6*)	6.2 (6.9*)	4.7 (5.9*)	3.8 (4.7)
1.5	non supported	(7.7)	(5.1)	(3.8)	(2.9)	(2.4)
	4-pt. supported	9.7* (9.7*)	8.4 (9.4*)	6.0 (7.4*)	4.6 (5.8)	3.7 (4.6)
0	non supported	(6.9*)	(4.9)	(3.6)	(2.9)	(2.3)
	4-pt. supported	6.9* (6.9*)	8.2 (9.8*)	5.9 (7.5)	4.6 (5.7)	3.7 (4.6)
-1.5	non supported		(4.8)	(3.6)	(2.8)	
	4-pt. supported		8.1 (9.5*)	5.8 (7.4*)	4.5 (5.7)	

Capacity values are stated in metric tons (t). The pump pressure is 360 bar (5,221 psi). The values, in accordance with ISO 10567, amount to 75% of the static tipping load or 87% of the hydraulic lifting force (marked \*). They apply to slewing operations through 360° on a firm and level surface. Values in brackets apply to the longitudinal direction of the undercarriage. “Non-supported” values apply when the load is hoisted above the front or rear axle. The weight of the attached hoisting equipment (quick attach, grab, magnet, load hook, etc.) must be deducted from the capacity values. Load holding valves on the lift cylinders and an overload warning device are required for crane operations.

# WORKING DIAGRAM

## MHL 335 REACH 10.7 m (35') MULTI-FUNCTION STICK



Work equipment:  
box-type boom 6.5 m (21.3'),  
multi-function stick 4.0 m (13.1')

Center of rotation

◀ Reach in m and ft

# LIFTING CAPACITY

## MHL 335 REACH 10.7 m (35') MULTI-FUNCTION STICK

HEIGHT (m)	UNDERCARRIAGE STABILIZERS	REACH (m)				
		4.5	6	7.5	9	10.5
10.5	non supported		(5.0*)			
	4-pt. supported		5.0* (5.0*)			
9	non supported		(6.0)	(4.1)		
	4-pt. supported		6.4* (6.4*)	5.1* (5.1*)		
7.5	non supported		(5.9)	(4.1)	(2.9)	
	4-pt. supported		6.4* (6.4*)	5.8* (5.8*)	4.1* (4.1*)	
6	non supported	(8.3*)	(5.8)	(4.0)	(2.9)	
	4-pt. supported	8.3* (8.3*)	6.9* (6.9*)	5.9* (5.9*)	4.7 (5.8*)	
4.5	non supported	(8.6)	(5.5)	(3.8)	(2.9)	
	4-pt. supported	10.0* (10.0*)	7.6* (7.6*)	6.1 (6.3*)	4.6 (5.5*)	
3	non supported	(7.9)	(5.1)	(3.7)	(2.8)	(2.2)
	4-pt. supported	12.0* (12.0*)	8.5 (8.5*)	5.9 (6.8*)	4.5 (5.7)	3.5 (4.4)
1.5	non supported	(7.3)	(4.8)	(3.5)	(2.7)	(2.1)
	4-pt. supported	7.4* (7.4*)	8.1 (9.2*)	5.8 (7.1*)	4.4 (5.6)	3.5 (4.4)
0	non supported	(6.3*)	(4.6)	(3.4)	(2.6)	
	4-pt. supported	6.3* (6.3*)	7.9 (9.4)	5.6 (7.2)	4.3 (5.5)	
-1.5	non supported			(3.3)		
	4-pt. supported			5.6 (6.9*)		

Capacity values are stated in metric tons (t). The pump pressure is 360 bar (5,221 psi). The values, in accordance with ISO 10567, amount to 75% of the static tipping load or 87% of the hydraulic lifting force (marked \*). They apply to slewing operations through 360° on a firm and level surface. Values in brackets apply to the longitudinal direction of the undercarriage. “Non-supported” values apply when the load is hoisted above the front or rear axle. The weight of the attached hoisting equipment (quick attach, grab, magnet, load hook, etc.) must be deducted from the capacity values. Load holding valves on the lift cylinders and an overload warning device are required for crane operations.