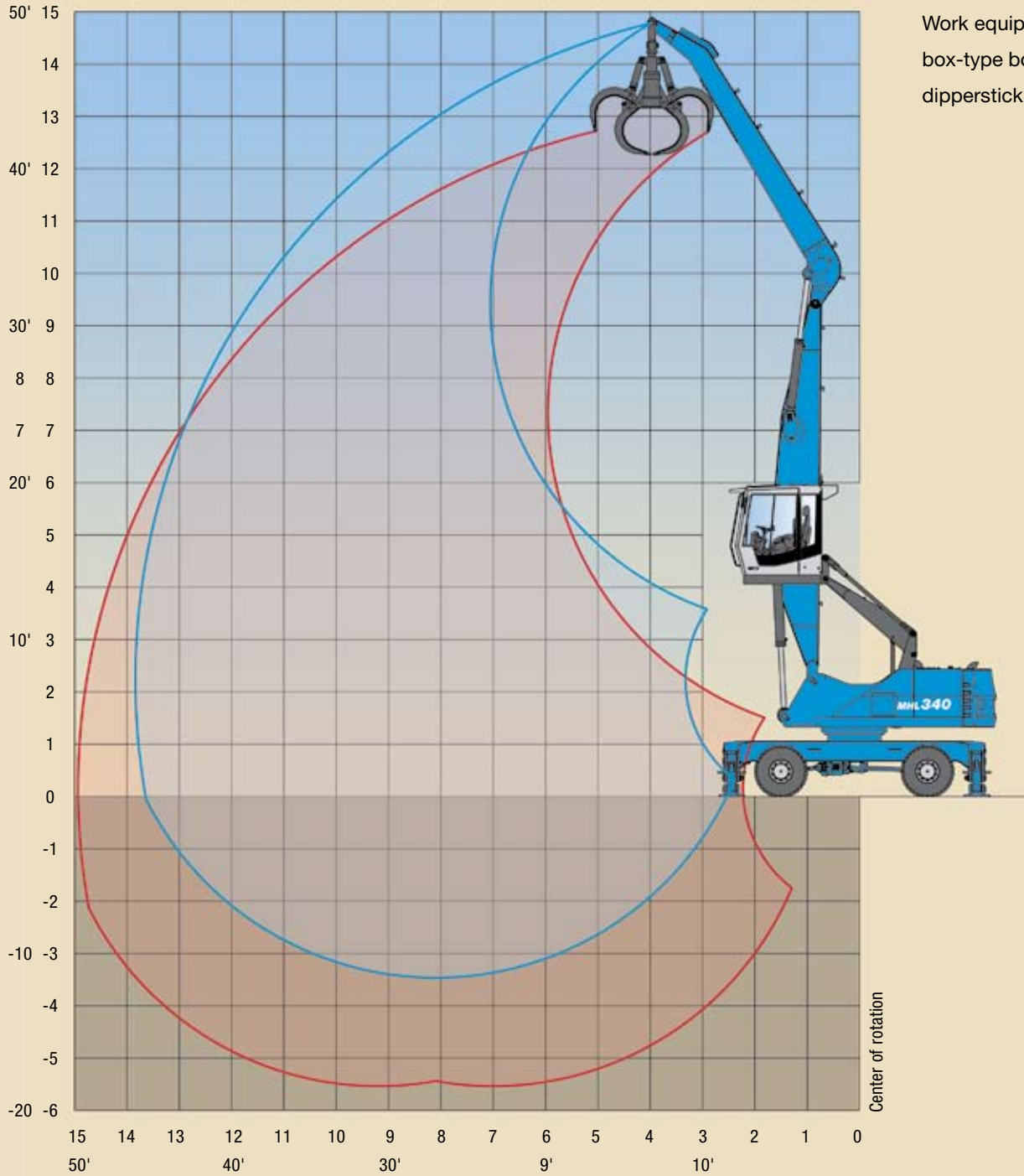


WORKING DIAGRAM

MHL 340D REACH 13.7 m (45')



Work equipment:
box-type boom 7.2 m (23.6'),
dipperstick 6.2 m (20.3')

◀ Reach in ft and m

LIFTING CAPACITY

MHL 340D REACH 13.7 m (45')

HEIGHT m	UNDERCARRIAGE STABILIZERS	REACHES m							
		3	4.5	6	7.5	9	10.5	12	13.5
13.5	non supported			(5.2*)					
	4-pt. supported			5.2* (5.2*)					
12	non supported				(5.3)	(3.5*)			
	4-pt. supported				5.4* (5.4*)	3.5* (3.5*)			
10.5	non supported				(5.4)	(3.9)	(2.9)		
	4-pt. supported				6.4* (6.4*)	5.3* (5.3*)	3.2* (3.2*)		
9	non supported				(5.4)	(3.9)	(2.9)		
	4-pt. supported				6.8* (6.8*)	5.9 (6.1*)	4.5 (4.9*)		
7.5	non supported				(5.3)	(3.8)	(2.9)	(2.2)	
	4-pt. supported				6.9* (6.9*)	5.8 (6.1*)	4.5 (5.5*)	3.5 (3.8*)	
6	non supported			(7.4)	(5.1)	(3.7)	(2.8)	(2.2)	
	4-pt. supported			8.6* (8.6*)	7.3* (7.3*)	5.7 (6.3*)	4.4 (5.4)	3.5 (4.3)	
4.5	non supported			(6.9)	(4.8)	(3.5)	(2.7)	(2.1)	(1.7)
	4-pt. supported			9.4* (9.4*)	7.4* (7.7*)	5.5 (6.5*)	4.3 (5.3)	3.4 (4.3)	2.4* (2.4*)
3	non supported		(9.8)	(6.3)	(4.4)	(3.3)	(2.6)	(2.0)	(1.6)
	4-pt. supported		14.2* (14.2*)	10.1 (10.3*)	7.0 (8.1*)	5.3 (6.6*)	4.1 (5.2)	3.3 (4.2)	2.7 (3.1*)
1.5	non supported		(8.5)	(5.6)	(4.1)	(3.1)	(2.4)	(1.9)	(1.6)
	4-pt. supported		15.1 (15.6*)	9.4 (10.9*)	6.6 (8.4*)	5.0 (6.3)	4.0 (5.0)	3.2 (4.1)	2.7 (3.2*)
0	non supported	(3.1*)	(7.6*)	(5.1)	(3.8)	(2.9)	(2.3)	(1.9)	(1.6)
	4-pt. supported	3.1* (3.1*)	7.6* (7.6*)	8.8 (10.8*)	6.3 (8.1)	4.8 (6.1)	3.9 (4.9)	3.2 (4.0)	2.7 (2.8*)
-1.5	non supported		(6.7*)	(4.9)	(3.6)	(2.8)	(2.2)	(1.9)	
	4-pt. supported		6.7* (6.7*)	8.5 (10.0*)	6.1 (7.8*)	4.7 (6.0)	3.8 (4.8)	3.1 (3.8*)	
-3	non supported			(4.8)	(3.5)	(2.7)			
	4-pt. supported			8.4* (8.4*)	6.0 (6.7*)	4.6 (5.3*)			

Capacity values are stated in metric tons (t) or lbs. The pump pressure is 355 bar (5,148 psi). The values, in accordance with ISO 10567, amount to 75% of the static tipping load or 87% of the hydraulic lifting force (marked *). They apply to slewing operations through 360° on a firm and level surface. Values in brackets apply to the longitudinal direction of the undercarriage. "Non-supported" values only apply when the load is hoisted above the front or rear axle. The weight of the attached hoisting equipment (grab, magnet, load hook) must be deducted from the capacity values. If the Terex Fuchs quick-change system is mounted on the boom, capacity is reduced by 300 kg (661 lbs). In accordance with EC guidelines, Load holding valves on the lift cylinders and an overload warning device are required for crane operations.

RECOMMENDED ATTACHMENTS

Loading system 13.7 m (45')

LIFT HOOKS	10 t
TEREX Fuchs CACTUS GRABS 0.4 m³	Open or half-closed shells
TEREX Fuchs CACTUS GRABS 0.6 m³	Open or half-closed shells
TEREX Fuchs MAGNET PLATE MP 1350	dia. = 1,350 mm with magnet system 17 kW
CLAMSHELL GRAB 0.65 m³	Density of bulk material up to 1,400 kg/m³
CLAMSHELL GRAB 1.0 m³	Density of bulk material up to 800 kg/m³

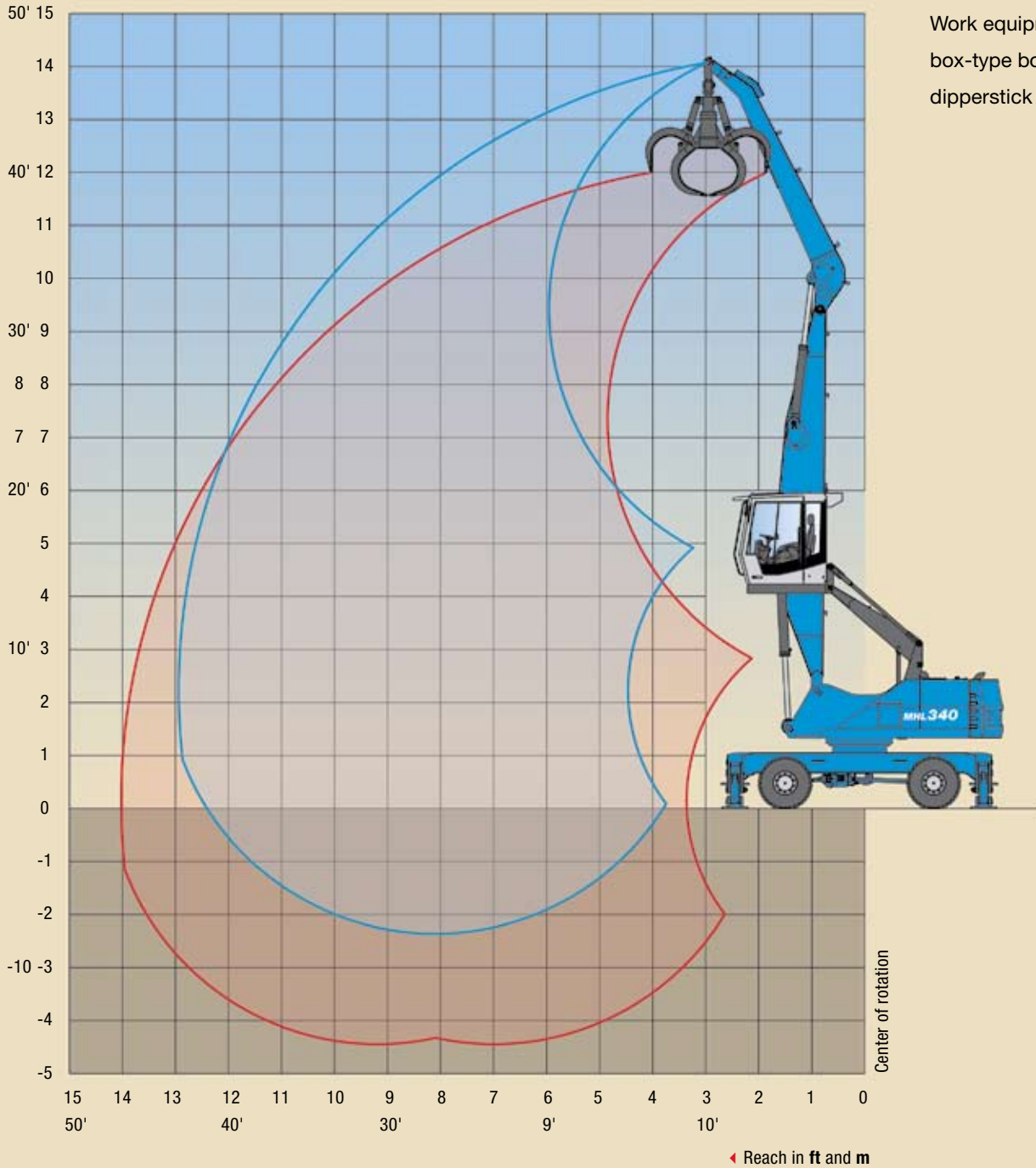
WORKING DIAGRAM

MHL 340D REACH 12.6 m (41.4')

Work equipment:

box-type boom 7.2 m (23.6'),

dipperstick 5.1 m (16.7')



LIFTING CAPACITY

MHL 340D REACH 12.6 m (41.4')

HEIGHT m	UNDERCARRIAGE STABILIZERS	REACHES m					
		4.5	6	7.5	9	10.5	12
13.5	non supported	(7.2*)					
	4-pt. supported	7.2* (7.2*)					
12	non supported		(7.3)	(4.9)			
	4-pt. supported		7.7* (7.7*)	5.3* (5.3*)			
10.5	non supported		(7.5)	(5.1)	(3.7)		
	4-pt. supported		8.8* (8.8*)	7.6* (7.6*)	5.4* (5.4*)		
9	non supported		(7.5)	(5.2)	(3.8)	(2.8)	
	4-pt. supported		8.8* (8.8*)	7.5* (7.5*)	5.7 (6.6*)	4.4 (4.4*)	
7.5	non supported		(7.3)	(5.1)	(3.7)	(2.8)	
	4-pt. supported		9.0* (9.0*)	7.6* (7.6*)	5.7 (6.6*)	4.4 (5.4)	
6	non supported		(7.0)	(4.9)	(3.6)	(2.8)	(2.2)
	4-pt. supported		9.6* (9.6*)	7.5 (7.9*)	5.6 (6.7)	4.3 (5.4)	3.5 (4.3*)
4.5	non supported	(10.3)	(6.5)	(4.6)	(3.5)	(2.7)	(2.1)
	4-pt. supported	14.0* (14.0*)	10.4* (10.4*)	7.2 (8.3*)	5.4 (6.7)	4.2 (5.3)	3.4 (4.3)
3	non supported	(9.0)	(5.9)	(4.3)	(3.3)	(2.6)	(2.1)
	4-pt. supported	15.7* (15.7*)	9.7 (11.0*)	6.9 (8.6*)	5.2 (6.5)	4.1 (5.2)	3.4 (4.2)
1.5	non supported	(6.1*)	(5.5)	(4.0)	(3.1)	(2.5)	(2.0)
	4-pt. supported	6.1* (6.1*)	9.2* (11.2*)	6.6 (8.4)	5.0 (6.3)	4.0 (5.1)	3.3 (4.2)
0	non supported	(5.3*)	(5.2)	(3.8)	(3.0)	(2.4)	(2.0)
	4-pt. supported	5.3* (5.3*)	8.8 (10.6*)	6.3 (8.1*)	4.9 (6.2)	3.9 (4.9)	3.3 (3.9*)
-1.5	non supported		(5.0)	(3.7)	(2.9)	(2.4)	
	4-pt. supported		8.7 (9.1*)	6.2 (7.3*)	4.8 (5.8*)	3.9 (4.5*)	

Capacity values are stated in metric tons (t) or lbs. The pump pressure is 355 bar (5,148 psi.) The values, in accordance with ISO 10567, amount to 75% of the static tipping load or 87% of the hydraulic lifting force (marked *). They apply to slewing operations through 360° on a firm and level surface. Values in brackets apply to the longitudinal direction of the undercarriage. “Non-supported” values only apply when the load is hoisted above the front or rear axle. The weight of the attached hoisting equipment (grab, magnet, load hook) must be deducted from the capacity values. If the Terex Fuchs quick-change system is mounted on the boom, capacity is reduced by 300 kg (661 lbs.) Load holding valves on the lift cylinders and an overload warning device are required for crane operations.

RECOMMENDED ATTACHMENTS

Loading system 12.6 m (41.4')

LIFT HOOKS	10 t
TEREX Fuchs CACTUS GRABS 0.6 m³	Open or half-closed shells
TEREX Fuchs CACTUS GRABS 0.8 m³	Open or half-closed shells
TEREX Fuchs MAGNET PLATE MP 1250	dia. = 1,250 mm with magnet system 13 kW
CLAMSHELL GRAB 1.0 m³	Density of bulk material up to 1,400 kg/m³
CLAMSHELL GRAB 1.4 m³	Density of bulk material up to 800 kg/m³