



TEREX®

GTH-6622

Telehandler

OPERATING WEIGHT	13,000 lbs (5,897 kg)
NET ENGINE POWER	81 hp (60 kW)
MAXIMUM LIFT CAPACITY	6,600 lbs (2,994 kg)
MAXIMUM LIFT HEIGHT	22' 5" (6.83 m)



TELEHANDLER GTH-6622

Specifications

Performance	
Operating weight with forks	13,000 lbs (5,897 kg)
Inside/outside turn radius	6' 7" / 12' 8" (2.01 / 3.86 m)
Maximum drawbar pull	14,750 lbs (6,690 kg)
Maximum lifting height	22' 5" (6.83 m)
Reach at maximum height	2' 6" (0.76 m)
Maximum forward reach	12' 9" (3.89 m)
Maximum lift capacity	6,600 lbs (2,994 kg)
Lift capacity at maximum height	4,400 lbs (1,996 kg)
Lift capacity at maximum reach	2,700 lbs (1,225 kg)
Obstruction angle	90°
Departure angle	42°
Fork-holder plate rotation	135°

Engine	
Diesel direct injection, oil cooled	
4 cylinders naturally aspirated	
Power @ 2,600 rpm (DIN 70020)	81 hp (60 kW)
Tier II Deutz BF4M2011	
Cold start intake glow plug	
Steering	
Power assisted steering	
Three steering modes: 2-wheel, 4-wheel coordinated, and 4-wheel crab	

Telehandler GTH-6622

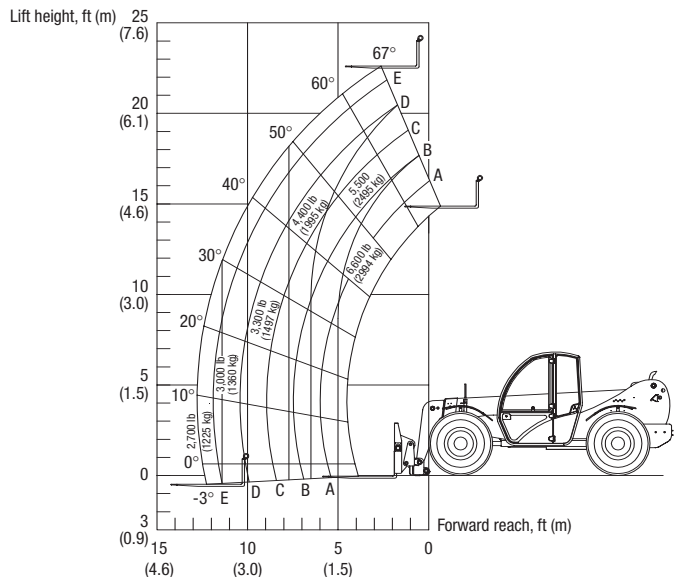
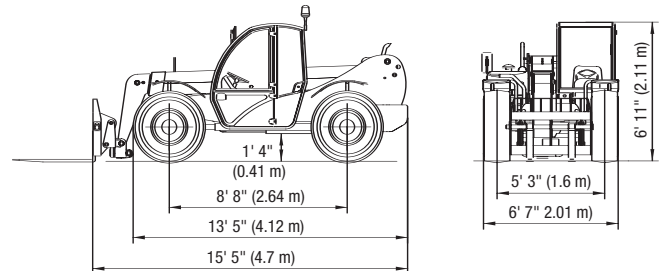
Specifications

Transmission	
Hydrostatic closed circuit, continuous speed regulation, variable displacement pump and motor	
2-speed mechanical dropbox	
4-wheel drive	
Limited-slip front axle differential	
Maximum speed	21 mph (33.8 km/h)
Brakes	
Inboard multiple wet disc	
Hydraulic System	
Fixed displacement hydraulic pump for proportional functions, hydraulic steering, quick coupling and tools	
21 gpm (79 Lpm) flow rate at 4,063 psi (280 bar) system pressure	
Tank Capacities	
Fuel tank capacity	24 gal (92 L)
Hydraulic oil tank capacity	28 gal (105 L)
Hydraulic system capacity (w/tank)	38 gal (145 L)
Tires	
400/70-20 in (405/70-24 in optional)	Air filled
8-holes wheel disk (DIN 70361)	
Standards Compliance	
ASME B 56.6, ISO 3471, ISO 3449	
Forks and Attachment Holder Plate	
Type	FEM 2
Length	48" (1.22 m)
Fork cross-section	2" x 4" (50 mm x 100 mm)
Attachment holder plate with hydraulic quick attach coupling	
Operating Cab	
Structure conforms to ISO 3471 (ROPS) and ISO 3449 (FOPS)	
Optional enclosed cab, heater and A/C	

Attachments and Accessories

A wide range of accessories and attachments for civil and industrial work is available; please ask for quote.

Dimensions and Working Ranges



Terex Construction Americas (SALES)

8800 Rostin Road
Southaven, MS 38671
USA
TEL 662-393-1800 SALES 866-837-3923
FAX 662-393-1700 EMAIL sales@terexca.com
WEB terex.com

Genie Industries, Inc. (WARRANTY, PARTS, SERVICE, & SUPPORT)

A Terex Company
18340 NE 76th Street
Redmond, WA 98073
PARTS & TECH SUPPORT 877-367-5606
FAX 888-274-6192
WEB genieindustries.com

For more information, product demonstration, or details on purchase, lease and rental plans, please contact your local Terex dealer.