



TEREX

TH1056C

Telehandler

OPERATING WEIGHT	31,200 lbs (14,149 kg)
NET ENGINE POWER	125 hp (93.3 kW)
MAXIMUM LIFT CAPACITY	10,000 lbs (4,536 kg)
MAXIMUM LIFT HEIGHT	56' 0" (17.1 m)



TELEHANDLER TH1056C

Specifications

Performance

Operating weight with forks	31,200 lbs (14,149 kg)
Inside/outside turn radius	6' 8" / 15' 2" (2.03 / 4.62 m)
Maximum lifting height	56' (17.1 m)
Reach at maximum height	7' 0" (2.13 m)
Maximum forward reach	40' (12.1 m)
Maximum lift capacity	10,000 lbs (4,536 kg)
Payload at maximum height	4,000 lbs (1,814 kg)
Payload at maximum reach	2,000 lbs (907 kg)

Steering

Power assisted steering

Three steering modes: 2-wheel, 4-wheel coordinated, and 4-wheel crab

Engine

John Deere 4045T	
4 cylinders turbocharged diesel	
Power @ 2,400 rpm	125 hp (93.3 kW)
Tier II Compliant	

Transmission

3 Speed Powershift/Torque Converter	
4 wheel drive	
Front axle differential lock	
Maximum speed	18.5 mph (29.8 km/h)

Brakes

Inboard multiple wet disc

Telehandler TH1056C

Specifications

Sway Control - Frame Leveling

Circuit isolated cylinders, 10 degrees either side of center

Frame Stabilizer

Twin rear axle lock cylinders

Hydraulic System

Pressure compensated hydraulic system

Variable-displacement axial piston pump

10 Micron filtration

Tank Capacities

Fuel 30 gal (113.6 L)

Hydraulic oil 48 gal (181.7 L)

Tires

1400 x 24-12 ply, calcium chloride solution filled

Forks and Attachment Holder Plate

Length 48" (1,200 mm)

Section 5" x 2.25" (127 mm x 57 mm)

Operating Cab

Structure conforms to ISO 8471 (ROPS) and ISO 8449 (FOPS)

Optional enclosed cab, heater and air conditioning

Attachments and Fork Options

Cubing tines

Pallet forks 60" & 72" (1.52 & 1.83 m)

Rotating fork frames 48", 60", & 72" (1.22, 1.52, & 1.83 m)

45° Swing fork frames 60" & 72" (1.52 & 1.83 m)

Rubbish bucket 1 yd³ (0.76 m³)

Variable reach truss boom

Quick switch attachment

Auxiliary hydraulic circuit

Dimensions with Boom Retracted and Down

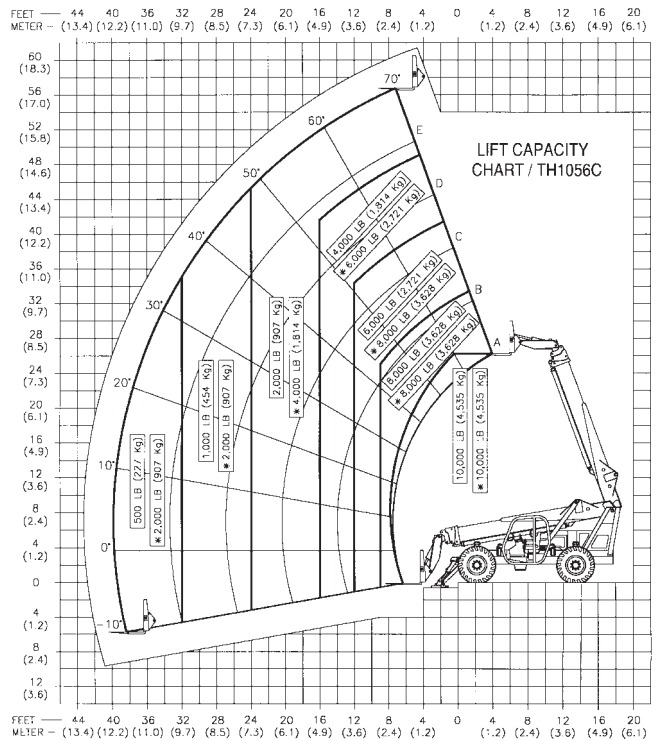
Overall L x W x H 27' x 8' 6" x 9' 9" (8.23 x 2.54 x 2.97 m)

Wheelbase 11' 3" (3.43 m)

Turning radius (outside tire) 15' 2" (4.62 m)

Ground clearance 1' 7" (.48 m)

Working Ranges and Lift Capacities



Genie Industries, Inc.

18340 NE 76th Street
PO Box 97030
Redmond, WA 98073-9730

TEL 425-881-1800
TOLL FREE 800-536-1800
PARTS & TECH SUPPORT 888-201-6008
FAX 425-883-8475
WEB terex.com
genieindustries.com

For more information, product demonstration, or details on purchase, lease and rental plans, please contact your local TEREX Distributor.

Effective date: October 1, 2005. For further information, please contact your local distributor or the TEREX sales office listed. Product specifications are subject to change without notice or obligation. The photographs and drawings in this brochure are for illustrative purposes only. Refer to the appropriate Operator's Manual for instructions on the proper use of this equipment. Failure to follow the appropriate Operator's Manual when using our equipment or to otherwise act irresponsibly may result in serious injury or death. Prices and specifications subject to change without notice. The only warranty applicable is the standard written warranty applicable to the particular product and sale. TEREX makes no other warranty, expressed or implied. Products and services listed may be trademarks, service marks or trade-names of TEREX Corporation and/or its subsidiaries in the USA and other countries and all rights are reserved. "TEREX" is a Registered Trademark of TEREX Corporation in the USA and many other countries. Copyright ©2005 TEREX Corporation